

Model: JSMA-PIH75ABK

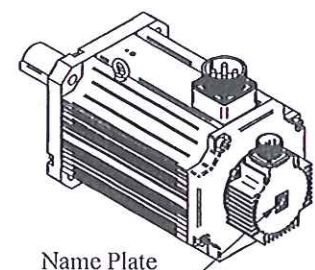
No.	Item	Symbol	Unit	Specification	No.	Item	Symbol	Unit	Specification
1	Drive	-	-	3 φ 220 VAC	13	Rotor Inertia	Jm	kg-cm ²	108.4±10%
2	Cooling Method	-	-	Totally Enclosed	14	Rated Power Rate	Q-R	Kw/s	210.78
3	Exciting Method	-	-	Permanent Magnet	15	Resistance	Ra	Ω	0.1±10%/2 φ
4	Resolution	-	-	2500 C/T	16	Inductance	L	mH	2.5±10% / 2 φ
5	Rated Output	P-R	KW	7.5	17	Mech. Time Constant	Tm	ms	0.96±10%
6	Rated Torque	T-R	N-m	47.8	18	Elect. Time Constant	Te	ms	25±10%
7	Max. Torque	T-max	N-m	122.6	19	Insulation Class	-	-	Class F
8	Rated Speed	N-R	rpm	1500	20	Operation Temp.	T	°C	0~40
9	Rated Current	I-R	A	38.6	21	Operation Humd.	RH	%	<80
10	Max. Current	I-max	A	99.1	22	Storage Temp.	T	°C	-20~-60°
11	Torque Constant	Kt	N-m/A	1.24±10%	23	Storage Humd.	RH	%	<80
12	Voltage Constant	Ke	V/krpm	82.3±10% / 2 φ	24	Weight	W	kgw	34.8

PIN	Signal
B	+5V
I	0V
A	A / U
C	\bar{A} / \bar{U}
H	B / V
D	\bar{B} / \bar{V}
G	Z / W
E	\bar{Z} / \bar{W}
F	FG

Encoder Wiring

PIN	Signal
A	U
B	V
C	W
D	FG

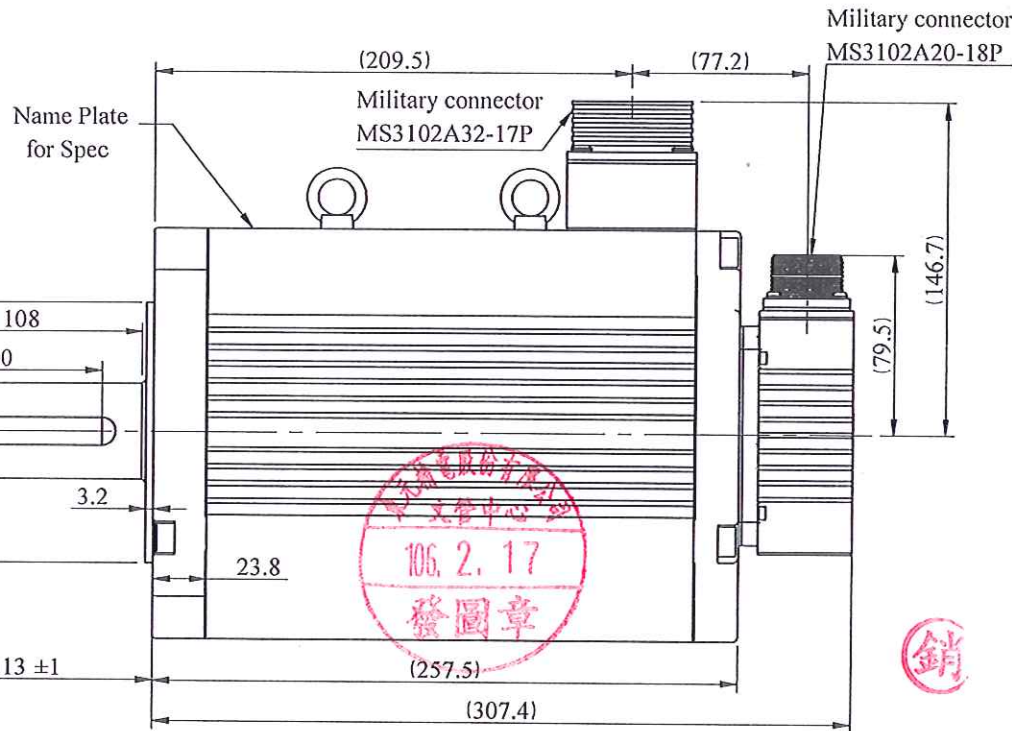
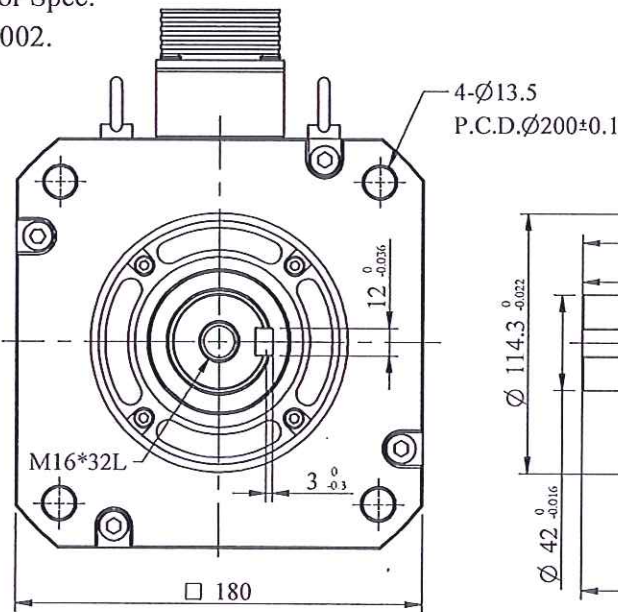
Motor Wiring



Name Plate for Notice

Note:

1. Motor to be IP67. (excluding the shaft opening & connectors)
2. The detail of Name plate for Spec. refers to the file. DC-JXE-002.



STANDARD TOLERANCE					APVD	<i>Z</i>	<i>7/15/17</i>	SCALE		UNIT	mm	NAME	Servo Motor Outline Drawing
X	±0.5				CHKD	<i>Michelle</i>	<i>2/10/17</i>					TITLE	JSMA-PIH75ABK
.X	±0.2				CHKD			3RD .A.P					
.XX	±0.05				DWN	Sam	02-07-17			Dept. Design	DWG.NO.	D01B18752H3NTAD01	
ANGLE	±30'				SIGNATURE		DATE						